



# Transit Time

## How to calculate the Estimated Date of Delivery

Transit time is the number of days that a shipment takes to get to the place that was requested. The time is counted **from the moment when a shipment leaves** the place of origin **until it reaches the destination** location.



Transit times may vary substantially based on the **mode of loading and transportation systems**. Even if we have a number of goods with the same point of origin and destination, which will be transported by the same way; transit time is not necessarily the same for each. This is due to differences in factors such as **weather, traffic congestion, customs clearance incidents, number of stops on the way or the difference in time for consolidation of shipments**.

Note that as **transit time also includes other aspects that go beyond transport** (like planning, booking transport and release of goods for customs purposes), **delays are a possibility**.



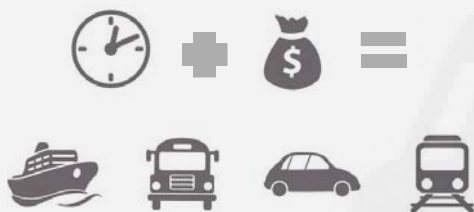


A cargo ship sailing from an European port to a US one will typically take 10-12 days depending on water currents and other factors. **Sometimes ship operators reduce cruising speed, thereby increasing transit time**, to reduce fuel consumption (“slow steaming”).



Moreover, **the transit time is closely associated with cost**. Each operation requires a time interval for execution, so that the costs and times of international distribution should be calculated for different alternatives of transport chains.

To choose the optimal transport chain for your cargo, our team has to compare costs and times of the different alternatives and the one that presents higher compatibility between these two aspects is the one that is chosen for your shipment. That is, the **alternative with the lowest total cost and where the delivery times are closest to those agreed, is the one that is selected**.



## Basic steps that integrate transit time:

### 1 Pick up of your boxes (from your office to the freight forwarding warehouse)

It can go from:

- Next day delivery
- 2 days
- 4-9 days by ground transport





## 2 Booking a space in the airline, ground transportation or ocean freight (international freight) can last from a few hours to a couple of days

When your freight forwarder consigns your shipment via commercial flight, you should be aware that the passengers luggage and perishable cargo is priority. Dry cargo is not priority. The airline will load your shipment when they have enough space. There is a risk that dry cargo can wait for a couple of days until there is enough space to be uploaded.



## 3 International Freight

Country	AIR	OCEAN	GROUND
Caribbean	1 day	2 weeks minimum	X
Europe	1-2 days	12 days	X
SE Asia	1-2 days	7-23 days	X
Mexico	1 day	2 weeks minimum	Los Cabos 4 days
South America	1 day	10-25 days	X
Middle East	2-4 days	28-37 days	X
India	2-4 days	22-30 days	X
South Africa	2-4 days	35-45 days	X

## 4 Customs clearance can go from 1 to 4 days



Efficiency of customs clearance process depends on:

- Efficiency and quality of services when the goods arrive at the port, airport or land border of entry until the time they are claimed from customs.





- Multiple inspections of the same shipment by different agencies regulating imports – are much more common in low performance countries.

- Safety and security measures from government agencies. Low performance of agencies responsible for enforcement of sanitary and phytosanitary regulation – and to a lesser extent other types of product standards

- Number of documents required for Customs Clearance.

- Irregularities discovered during examinations

- Excessive physical inspection or inappropriate dependence on inspector discretion causes large variations in clearance times.

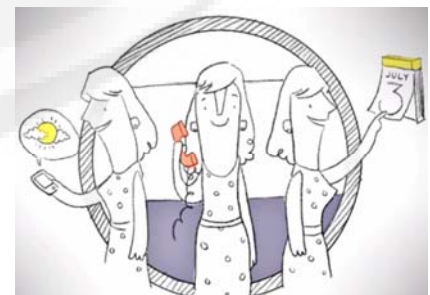


- Import clearance time - time between entrance of truck into the terminal and release of goods.

**There is no commonly accepted definition of customs clearance times nor is there a standard methodology for calculating the days required to clear customs at national points of entry.**



**5 Transit time to venue can go from hours to the next day delivery**





**EXHIBITIONS CARGO** has assembled its own network with the most experienced and respected Customs Brokers and Freight Forwarders at the top meeting-destinations on the globe. We are specialized in the Meetings, Incentives, Conventions and Exhibitions industry. We handle the entire shipping process, from your door to the event site of any volume of cargo. We work to get your equipment and materials out and back from your international venue.

Contact us for more useful information at:

E-mail:

[info@exhibitions cargo.com](mailto:info@exhibitions cargo.com)

[www.exhibitions cargo.com](http://www.exhibitions cargo.com)

+1 (619) 793 5414

+1 (312) 373 9257



**exhibitions  
Cargo**®



\*All the names of the products, logos, brands, images and trademarks that are in use in this website/pamphlet are the property of their rightful owners. They are not affiliated with Exhibitions Cargo, our products and/or our website. FedEx, UPS, etc do not sponsor or endorse Exhibitions Cargo or any of our products or affiliates. Therefore, no link or commercial agreement should be assumed between any of these companies and Exhibitions Cargo.