

Insurance

DENIAL



due to improper packaging



Package insufficiently sealed or closure failed

Specific claim denials which occur as a result of insufficient seal or closure are:

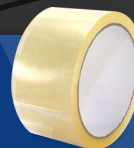
- The package closure was not sufficient and failed, allowing merchandise to fall out.

How to securely seal packages:

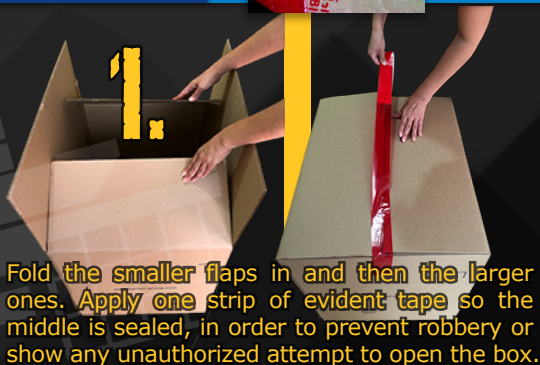
You will need



Polyester tamper evident tape that is at least **two inches wide**.



Nylon-reinforced filament tape that is at least **two inches wide** preferably in a dispenser.



Repeat this procedure on the bottom flaps of the box.



3.

Surround the width of the box with nylon tape, so that the strips form an "H" between them. Make sure the tape surrounds completely the box at least 2 times (2 laps). Please remember to put the strips of tape at least two inches away from the edge of the box.



4.

Tape the flaps edges with smaller strips of the evident tape in order to avoid the lifting of the flaps and ensure that the goods remain inside the box. Repeat this procedure on the bottom flaps of the box.



Securely seal your packages





Insufficient packaging, cushioning, or protection

Specific claim denials which occur as a result of insufficient packaging, cushioning, or protection are:

The packaging was not sufficient to protect the merchandise.



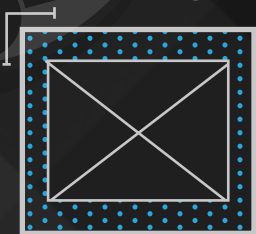
The merchandise was not properly placed within the packaging to sufficiently protect it.



How to securely cushion contents:

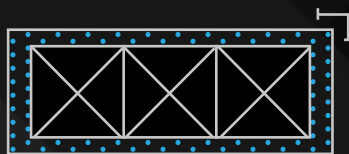
For each item

2 inch of cushioning material



From the box walls

2 inch away from the box



Each item within the package should be wrapped separately with a sufficient amount of suitable cushioning material. Each item should be surrounded by at least two inches (5.08 cm) of material and placed a minimum of two inches (5.08 cm) away from the box walls.

This prevents product-against-product damage and protects the contents from shock and vibration, which can pass from the outside of the box to the contents.

Fragile items need separation from each other, and from the corners, sides, top, and bottom of the box. **These packages may require added cushioning or a double box.**



Each item should be wrapped separately



Overfilled boxes will burst; underfilled boxes will collapse, causing damage to the contents.

Check our Infographic "16 packing tips" for more useful information.



The single wall (or double wall) box was not sufficient to support the product's weight



How to determine if the box is strong enough to support the weight of the contents:

Never exceed the maximum gross weight limit for the box, which is printed on the Box Maker's Certificate on the bottom flap of most boxes. After years of testing and analysis, engineers at the Package Lab have developed box strength specifications for single-package distribution.



The product's packaging closure failed causing leakage

How to securely seal contents in risk of leakage:

- Make certain that caps or covers are applied securely to help ensure they do not loosen during transit and result in a leak. It is recommended that you add a heat induction foil seal to help prevent leakage.



When shipping liquids in a sealed bottle, it is important to apply closures with the correct application torque to ensure that the liner compresses and forms a good seal. **Proper application torque will also help prevent the closures from backing off during vibration.**

Liquids in plastic bottles need to be separated from each other inside the corrugated shipping container. Use a corrugated divider to create cells for each bottle.



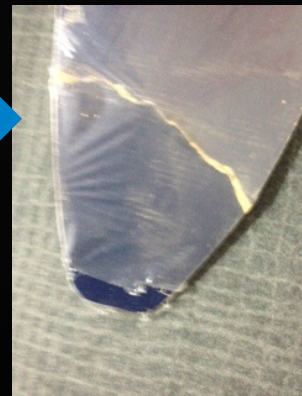
Damage to the external case due to no protective covering

How to ship cases using a protective covering:

Some contents come with their own containers or cases. These may not be durable enough to protect contents during shipment.



Original cases may not be durable enough to protect contents during shipment.

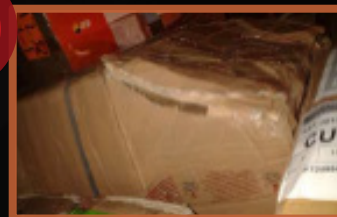


Place cases into a corrugated shipping container following the box strength guidelines.



The package lacked edge protection to prevent it from bending

How to protect package edges to prevent them from bending



Note:

This page contains general packaging guidelines which illustrate the minimum recommended steps to adequately protect package contents. Depending on package contents, additional steps may be necessary to ensure that packages are adequately and securely packed, wrapped and cushioned for transportation.



**exhibitions
Cargo®**

Contact us!

**(312) 373 9257
(619) 793 5414**

info@exhibitions cargo.com
claudia@exhibitions cargo.com
www.exhibitions cargo.com

10 S. Riverside Plaza Suite 875
Chicago, IL 60606.

All the names of the products, logos, brands, images and trademarks that are in use in this website/pamphlet are the property of their rightful owners. They are not affiliated with Exhibitions Cargo, our products and/or our website. FedEx, UPS, etc do not sponsor or endorse Exhibitions Cargo or any of our products or affiliates. Therefore, no link or commercial agreement should be assumed between any of these companies and Exhibitions Cargo.